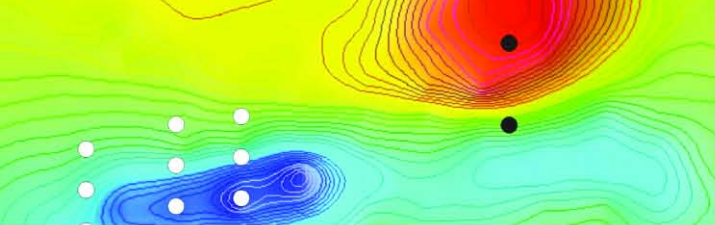


For personal use only

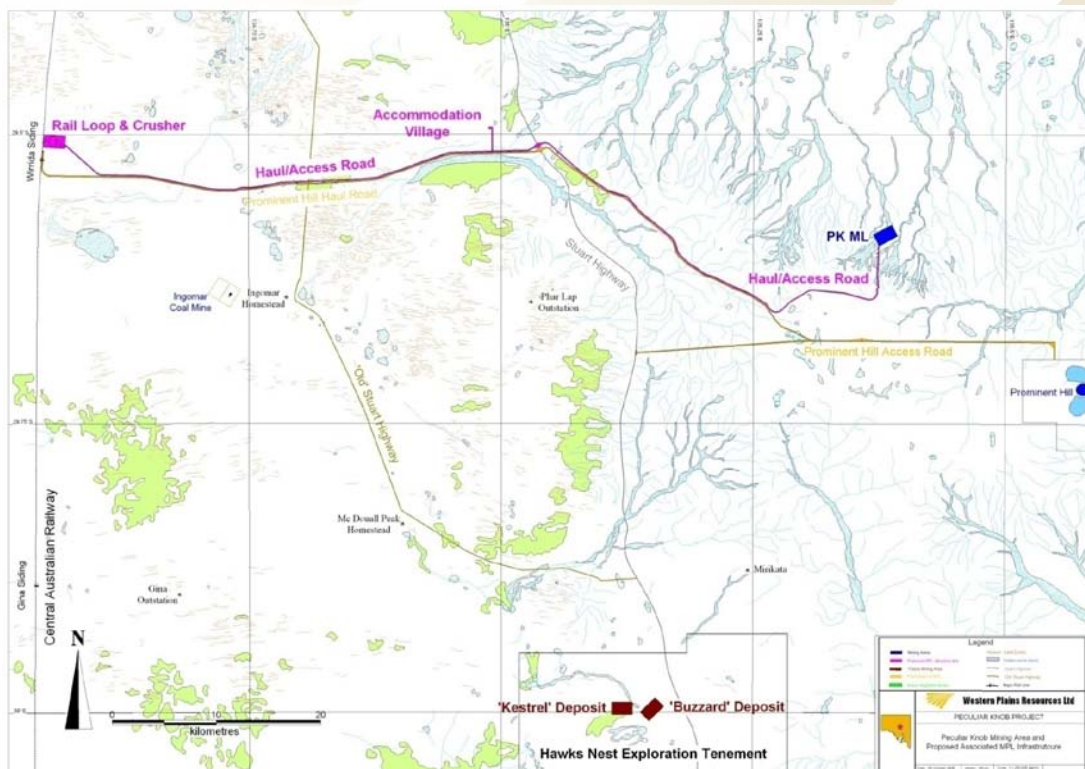


ASX and Media Release

Mining and exploration inside the Woomera Prohibited Area

Western Plains Resources Ltd (ASX:WPG) has become aware of last week's announcement by the Commonwealth Treasurer that the proposed acquisition of OZ Minerals Limited by a Chinese corporation could not proceed if it included the Prominent Hill mine because Prominent Hill lies within the Woomera Prohibited Area (WPA) in South Australia.

Western Plains' ML 6314 at Peculiar Knob and EL 3196 and MCs 3809 (Kestrel) and 3810 (Buzzard) at Hawks Nest also lie with WPA. The locations of these tenements are shown in the drawing below.



30 March 2009



ABN 51 109 426 502
Level 9, Kyle House
27-31 Macquarie Place
Sydney NSW 2000
Telephone (+612) 9251 1044
Facsimile (+612) 9247 3434
info@westernplainsresources.com.au
www.westernplainsresources.com.au

Western Plains has executed Deeds of Access (**Deeds**) with the Commonwealth for mining (which includes the infrastructure required for the mine) at Peculiar Knob and exploration at Hawks Nest. The Deeds provide certain rights to and obligation on the parties in respect of mining and exploration activities within the WPA.

Western Plains disclosed on 30 January 2009 that it was in discussions and negotiations with a number of foreign parties for project funding and offtake arrangements. These discussions and negotiations are continuing.

The Commonwealth has the right to modify or terminate the Deeds under certain circumstances, including where control of the Company or control of any joint venture set up in relation to its tenements within the WPA passes to a foreign corporation.

Relevantly, the Company does not believe the Commonwealth would intervene in transactions the Company may wish to implement with a foreign shareholder or joint venture partner, providing the foreign party did not control the Company or a joint venture involving its tenements that lie within the WPA.

Further Information

For further information please contact WPG's Executive Chairman Bob Duffin, on (02) 9247 3232 or 0412 234 684, or Heath Roberts, Executive Director and Company Secretary on (02) 9247 7359 or 0419 473 925.

For personal use only